

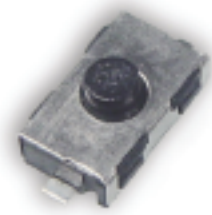
KSR2D Series Subminiature Detect Switch for SMT

Features/Benefits

- Saves PCB space
- G terminations
- Soft actuator
- RoHS compliant and compatible

Typical Applications

- Automotive
- Cellular phones & accessories
- Industrial electronics
- Computers & network equipment



Specification

FUNCTION: momentary action
CONTACT ARRANGEMENT: N.O.
TERMINALS: Gullwing type for SMT

Mechanical

Type	Operating force Newtons (grams)	Operating life (operations)	Travel
KSR2D3MGLFG	1,5 ± 0,5N	100,000	0,3 ± 0,15

Packaging

Switches are delivered on continuous tape, in reels of 2,500 pieces.

For information on specific and custom switches, consult Customer Service Center.

Electrical

MAXIMUM POWER:	Gold
MAXIMUM VOLTAGE:	0.2 VA
MINIMUM VOLTAGE:	32 VDC
MAXIMUM CURRENT DC:	20 mV
MINIMUM CURRENT DC:	10 mA
CONTACT RESISTANCE:	1 mA
INSULATION RESISTANCE	100 mΩ
BOUNCE TIME:	(100 V): 10 ⁹ Ω
	1 ms

Environmental

OPERATING TEMPERATURE:	Gold
STORAGE TEMPERATURE:	-40°C to 125°C
	-55°C to 125°C

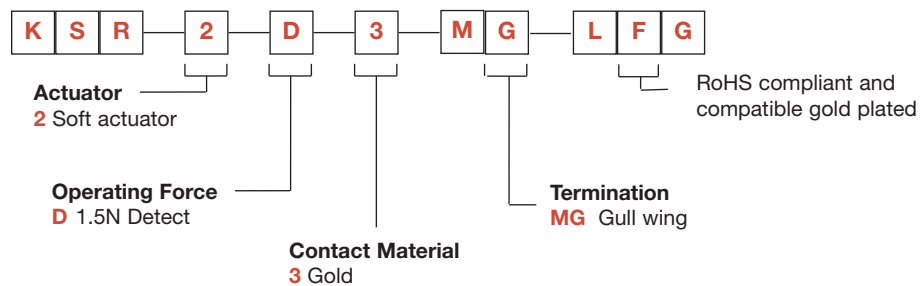
Process

SOLDERING: Compatible with lead free reflow soldering process

How To Order

Our easy build-a-switch concept allows you to mix and match options to create the switch you need. To order, select desired option from each category and place it in the appropriate box.

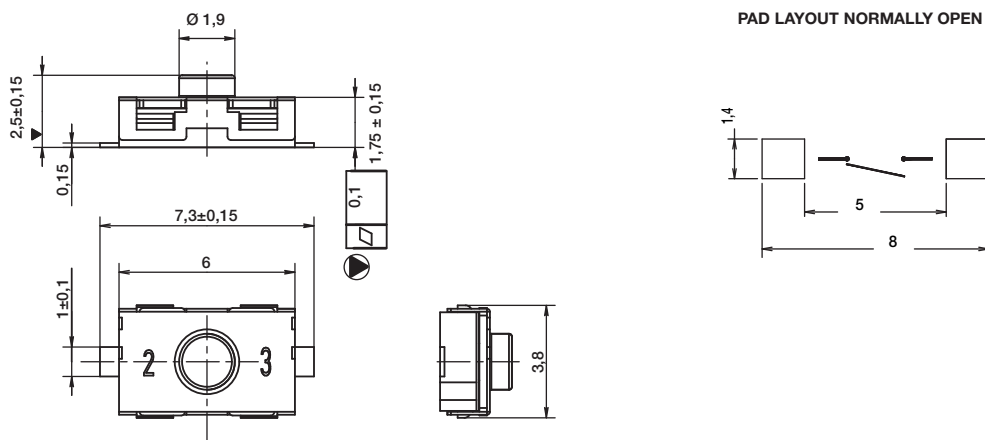
For any part number different from those listed above, please consult your local representative.



F

Detect

KSR2D



C&K



Dimensions are shown: mm
Specifications and dimensions subject to change

KSM Series Side Actuated Detect Switches

Features/Benefits

- Low profile – 1,5 mm
- Momentary, normally closed contact
- Thermo-formed tape & reel
- RoHS compliant and compatible

Typical Applications

- Automotive
- Position sensing switch
- Edge card reset switch
- Smart card presence switch detector
- DSL and fiber optic networks



Specifications

FUNCTION: Momentary action

CONTACT TYPE: SPST Normally closed

Mechanical

TRAVEL TO BREAK: $0.3 \text{ mm} \leq T_e \leq 0.70 \text{ mm}$

TOTAL TRAVEL: $1.72 \text{ mm} \leq T_m \leq 2.12 \text{ mm}$

FORCE AT MAXIMUM TRAVEL: $0.99 \text{ N} \leq F_a \leq 1.34 \text{ N}$

OPERATING LIFE: 50,000 cycles

Packaging

Switches are delivered on continuous tape, in reels of 2,000 pieces

Electrical

MAXIMUM POWER: 1.0 VA

MAXIMUM VOLTAGE: 32 VDC

MINIMUM VOLTAGE: 20 mV

MAXIMUM CURRENT DC: 50 mA

MINIMUM CURRENT DC: 1 mA

CONTACT RESISTANCE: $\leq 900 \text{ m}\Omega$

INSULATION RESISTANCE: $\geq 10^9 \Omega$

DIELECTRIC STRENGTH: $\geq 250 \text{ Vrms}$

BOUNCE TIME: $\leq 3 \text{ ms}$

Environmental

OPERATING TEMPERATURE: -40°C to $+85^\circ\text{C}$

STORAGE TEMPERATURE: -55°C to $+85^\circ\text{C}$

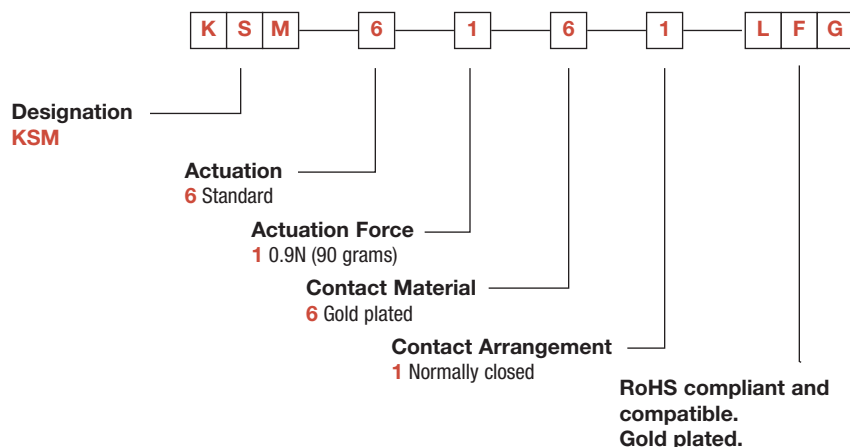
Process

SOLDERING: Compatible with lead free reflow process

NOTE: Specifications listed above are for switches with standard options. For information on specific and custom switches, consult Customer Service Center.

Build-A-Switch

To order, simply select desired option from each category and place in the appropriate box. Available options are shown and described on page F-19. For additional options not shown in catalog, consult our Customer Service Center.



Dimensions are shown: mm
Specifications and dimensions subject to change