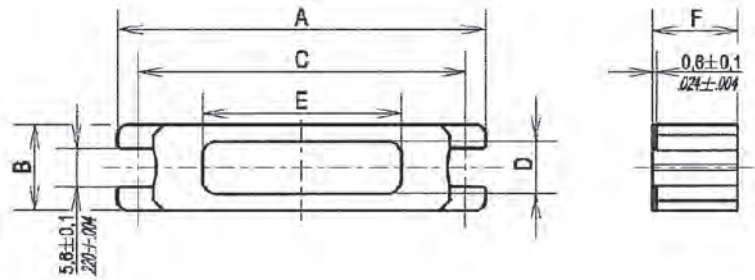
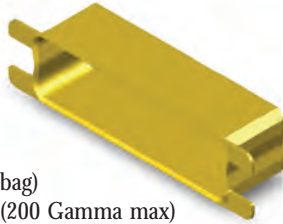


## Potting Shell (rear open)

Max weight (grams) :  
N.A. (not on board)

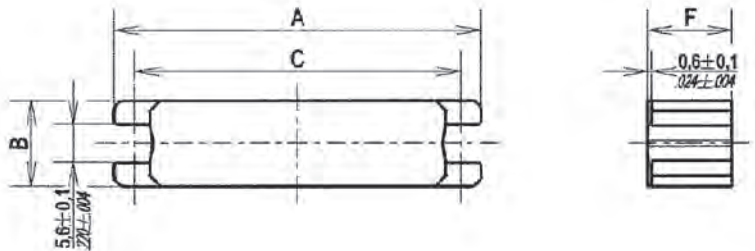
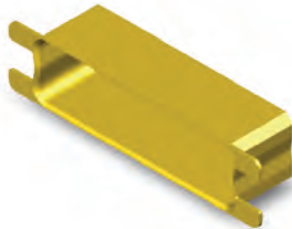


Packaging unit : 1 piece (plastic bag)  
Residual magnetism level NMB (200 Gamma max)

Shell Size	ESA/ESCC Variant	A ± 0,38 (.015)	B ± 0,38 (.015)	C ± 0,13 (.005)	D ± 0,50 (.020)	E ± 0,50 (.020)	F ± 0,38 (.015)
E	3401-022-81	30,70 (1.208)	12,70 (.500)	24,99 (.984)	7,60 (.300)	9,00 (.354)	12,30 (.484)
A	3401-022- 17	38,89 (1.531)	12,70 (.500)	33,32 (1.312)	7,60 (.300)	14,92 (.587)	12,30 (.484)
B	3401-022-18	52,78 (2.078)	12,70 (.500)	47,04 (1.852)	7,60 (.300)	28,54 (1.124)	12,30 (.484)
C	3401-022-19	69,04 (2.718)	12,70 (.500)	63,50 (2.500)	7,60 (.300)	44,47 (1.751)	12,30 (.484)
D	3401-022-20	66,67 (2.625)	15,47 (.609)	61,12 (2.406)	9,90 (.390)	44,47 (1.751)	12,30 (.484)

## Switching Shell (rear closed)

Max weight (grams)  
Size E : 6,3  
Size A : 8,4  
Size B : 11,6  
Size C : 15,5  
Size D : 16,6



Packaging unit : 1 piece (plastic bag)  
Residual magnetism level NMB (200 Gamma max)

Shell Size	ESA/ESCC Variant	A ± 0,38 (.015)	B ± 0,38 (.015)	C ± 0,13 (.005)	F ± 0,38 (.015)
E	3401-022-82	30,70 (1.208)	12,70 (.500)	24,99 (.984)	12,30 (.484)
A	3401-022-21	38,89 (1.531)	12,70 (.500)	33,32 (1.312)	12,30 (.484)
B	3401-022-22	52,78 (2.078)	12,70 (.500)	47,04 (1.852)	12,30 (.484)
C	3401-022-23	69,04 (2.718)	12,70 (.500)	63,50 (2.500)	12,30 (.484)
D	3401-022-24	66,67 (2.625)	15,47 (.609)	61,12 (2.406)	12,30 (.484)

## Cross References

Type	Size	ESA/ESCC Quality Level		FR023 Quality Level		FR022 Quality Level	
		Description	Part Number	Description	Part Number	Description	Part Number
Potting shell	E	340102281B NMB	C115366-2274C	DE115366-2274-FR023	C115366-2274E	DE115366-2274	C115366-2274A
	A	340102217B NMB	C115366-2275C	DA115366-2275-FR023	C115366-2275E	DA115366-2275	C115366-2275A
	B	340102218B NMB	C115366-2276C	DB115366-2276-FR023	C115366-2276E	DB115366-2276	C115366-2276A
	C	340102219B NMB	C115366-2277C	DC115366-2277-FR023	C115366-2277E	DC115366-2277	C115366-2277A
	D	340102220B NMB	C115366-2278C	DD115366-2278-FR023	C115366-2278E	DD115366-2278	C115366-2278A
Switching shell	E	340102282B NMB	C115366-2279C	DE115366-2279-FR023	C115366-2279E	DE115366-2279	C115366-2279A
	A	340102221B NMB	C115366-2280C	DA115366-2280-FR023	C115366-2280E	DA115366-2280	C115366-2280A
	B	340102222B NMB	C115366-2281C	DB115366-2281-FR023	C115366-2281E	DB115366-2281	C115366-2281A
	C	340102223B NMB	C115366-2282C	DC115366-2282-FR023	C115366-2282E	DC115366-2282	C115366-2282A
	D	340102224B NMB	C115366-2283C	DD115366-2283-FR023	C115366-2283E	DD115366-2283	C115366-2283A

## Straight Clamp

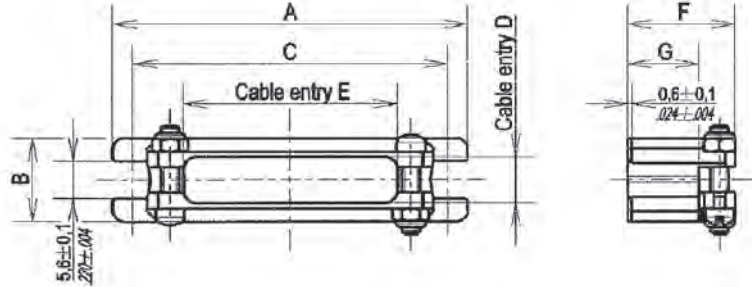
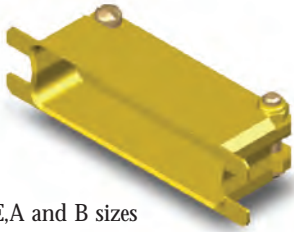
Max weight (grams) :

- Size E : 8,5
- Size A : 10,6
- Size B : 13,7
- Size C : 18,4
- Size D : 19,8

Number of screws : 2 for E,A and B sizes  
3 for C and D sizes

Packaging unit : 1 piece (plastic bag)

Residual magnetism level NMB (200 Gamma max)



Shell Size	ESA/ESCC Variant	A ± 0,38 (.015)	B ± 0,38 (.015)	C ± 0,13 (.005)	D ± 0,38 (.015)	E ± 0,38 (.015)	F ± 0,38 (.015)	G ± 0,38 (.015)
E	3401-022-83	30,70 (1.208)	12,70 (.500)	24,99 (.984)	7,50 (.295)	11,00 (.433)	16,20 (.638)	10,70 (.421)
A	3401-022-25	38,89 (1.531)	12,70 (.500)	33,32 (1.312)	7,50 (.295)	19,00 (.748)	16,20 (.638)	10,70 (.421)
B	3401-022-26	52,78 (2.078)	12,70 (.500)	47,04 (1.852)	7,50 (.295)	32,00 (1.260)	16,20 (.638)	10,70 (.421)
C	3401-022-27	69,04 (2.718)	12,70 (.500)	63,50 (2.500)	7,50 (.295)	48,00 (1.890)	16,20 (.638)	10,70 (.421)
D	3401-022-28	66,67 (2.625)	15,47 (.609)	61,12 (2.406)	9,88 (.389)	46,00 (1.811)	17,80 (.700)	12,30 (.484)

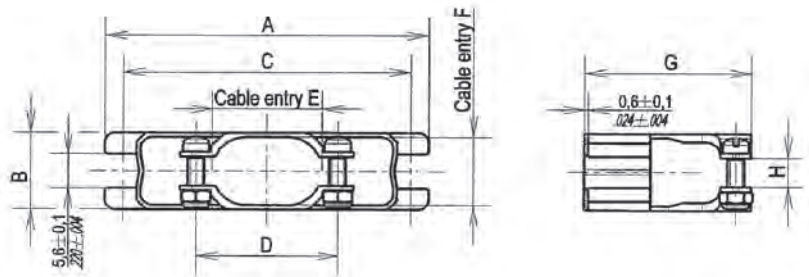
## Round Clamp

Max weight (grams) :

- Size E : 8,9
- Size A : 9,5
- Size B : 12,3
- Size C : 14,8
- Size D : 15,2

Packaging unit : 1 piece (plastic bag)

Residual magnetism level NMB (200 Gamma max)



Shell Size	ESA/ESCC Variant	A ± 0,38 (.015)	B ± 0,38 (.015)	C ± 0,13 (.005)	D ± 0,38 (.015)	E ± 0,38 (.015)	F ± 0,38 (.015)	G ± 0,38 (.015)	H ± 0,13 (.005)
E	3401-022-29	30,70 (1.208)	12,70 (.500)	24,99 (.984)	17,80 (.701)	10,50 (.413)	10,50 (.413)	26,20 (1.031)	3,20 (.126)
A	3401-022-30	38,89 (1.531)	12,70 (.500)	33,32 (1.312)	17,80 (.701)	11,10 (.437)	11,10 (.437)	26,20 (1.031)	3,20 (.126)
B	3401-022-31	52,78 (2.078)	12,70 (.500)	47,04 (1.852)	23,30 (.917)	18,10 (.713)	11,10 (.437)	27,00 (1.063)	4,70 (.185)
C	3401-022-32	69,04 (2.718)	12,70 (.500)	63,50 (2.500)	29,70 (1.169)	25,10 (.988)	11,10 (.437)	27,00 (1.063)	6,30 (.248)
D	3401-022-33	66,67 (2.625)	15,47 (.609)	61,12 (2.406)	30,90 (1.217)	26,90 (1.059)	13,90 (.547)	27,00 (1.063)	7,90 (.311)

## Cross References

Type	Size	ESA/ESCC Quality Level		FR023 Quality Level		FR022 Quality Level	
		Description	Part Number	Description	Part Number	Description	Part Number
Straight clamp	E	340102283B NMB	C115366-2284C	DE115366-2284-FR023	C115366-2284E	DE115366-2284	C115366-2284A
	A	340102225B NMB	C115366-2285C	DA115366-2285-FR023	C115366-2285E	DA115366-2285	C115366-2285A
	B	340102226B NMB	C115366-2286C	DB115366-2286-FR023	C115366-2286E	DB115366-2286	C115366-2286A
	C	340102227B NMB	C115366-2287C	DC115366-2287-FR023	C115366-2287E	DC115366-2287	C115366-2287A
	D	340102228B NMB	C115366-2288C	DD115366-2288-FR023	C115366-2288E	DD115366-2288	C115366-2288A
Round clamp	E	340102229B NMB	C115366-2289C	DE115366-2289-FR023	C115366-2289E	DE115366-2289	C115366-2289A
	A	340102230B NMB	C115366-2290C	DA115366-2290-FR023	C115366-2290E	DA115366-2290	C115366-2290A
	B	340102231B NMB	C115366-2291C	DB115366-2291-FR023	C115366-2291E	DB115366-2291	C115366-2291A
	C	340102232B NMB	C115366-2292C	DC115366-2292-FR023	C115366-2292E	DC115366-2292	C115366-2292A
	D	340102233B NMB	C115366-2293C	DD115366-2293-FR023	C115366-2293E	DD115366-2293	C115366-2293A

## Deep Straight Clamp

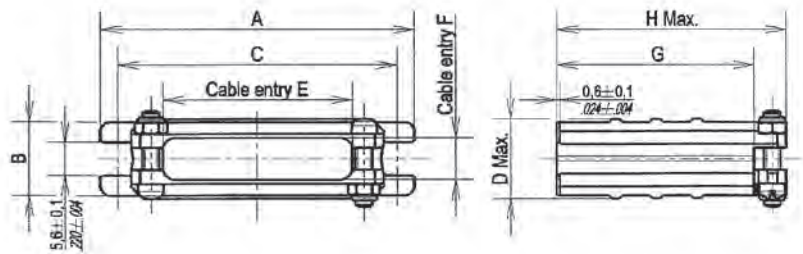
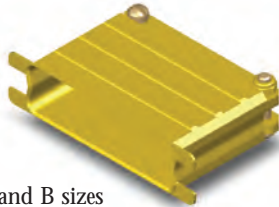
Max weight (grams) :

- Size E : 13
- Size A : 16,3
- Size B : 26,5
- Size C : 35
- Size D : 38,5

Number of screws : 2 for E,A and B sizes  
3 for C and D sizes

Packaging unit : 1 piece (plastic bag)

Residual magnetism level NMB (200 Gamma max)



Shell Size	ESA/ESCC Variant	A ± 0,38 (.015)	B ± 0,38 (.015)	C ± 0,13 (.005)	D Max.	E ± 0,38 (.015)	F ± 0,38 (.015)	G ± 0,38 (.015)	H Max.
E	3401-022-34	30,70 (1.208)	12,70 (.500)	24,99 (.984)	14,70 (.579)	11,00 (.433)	7,50 (.295)	19 (.748)	31,70 (1.248)
A	3401-022-35	38,89 (1.531)	12,70 (.500)	33,32 (1.312)	14,70 (.579)	19,00 (.748)	7,50 (.295)	19 (.748)	31,70 (1.248)
B	3401-022-36	52,78 (2.078)	12,70 (.500)	47,04 (1.852)	14,70 (.579)	32,00 (1.260)	7,50 (.295)	25,40 (1.000)	39,70 (1.563)
C	3401-022-37	69,04 (2.718)	12,70 (.500)	63,50 (2.500)	14,70 (.579)	48,00 (1.890)	7,50 (.295)	25,40 (1.000)	39,70 (1.563)
D	3401-022-38	66,67 (2.625)	15,47 (.609)	61,12 (2.406)	17,40 (.685)	46,00 (1.811)	9,88 (.389)	28,60 (1.126)	42,90 (1.689)

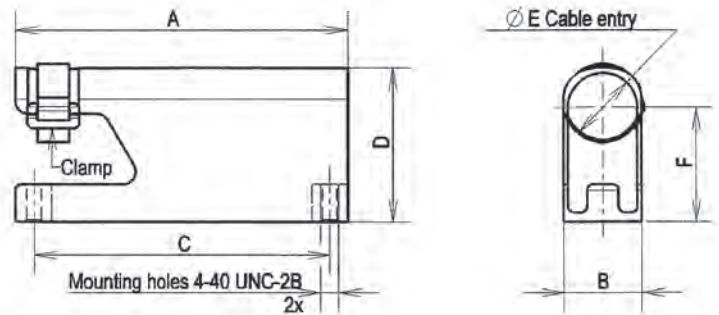
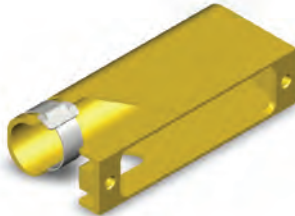
## 90° Entry

Max weight (grams) :

- Size E : 14,6
- Size A : 17,2
- Size B : 21,4
- Size C : 33,3
- Size D : 38,7

Packaging unit : 1 piece with 1 clamp (plastic bag)

Residual magnetism level NMB (200 Gamma max)



Shell Size	ESA/ESCC Variant	A ± 0,38 (.015)	B ± 0,38 (.015)	C ± 0,13 (.005)	D ± 0,25 (.010)	E ± 0,38 (.015)	F ± 0,38 (.015)
E	3401-022-39	30,70 (1.208)	12,70 (.500)	24,99 (.984)	18,20 (.716)	11,10 (.437)	11,85 (.466)
A	3401-022-40	38,89 (1.531)	12,70 (.500)	33,32 (1.312)	18,20 (.716)	11,10 (.437)	11,85 (.466)
B	3401-022-41	52,78 (2.078)	12,70 (.500)	47,04 (1.852)	24,60 (.968)	11,10 (.437)	18,25 (.718)
C	3401-022-42	69,04 (2.718)	12,70 (.500)	63,50 (2.500)	30,20 (1.189)	11,10 (.437)	23,85 (.939)
D	3401-022-43	66,67 (2.625)	15,47 (.609)	61,12 (2.406)	31,70 (1.248)	13,90 (.547)	23,95 (.943)

## Cross References

Type	Size	ESA/ESCC Quality Level		FR023 Quality Level		FR022 Quality Level	
		Description	Part Number	Description	Part Number	Description	Part Number
Deep, straight clamp	E	340102234B NMB	C115366-2294C	DE115366-2294-FR023	C115366-2294E	DE115366-2294	C115366-2294A
	A	340102235B NMB	C115366-2295C	DA115366-2295-FR023	C115366-2295E	DA115366-2295	C115366-2295A
	B	340102236B NMB	C115366-2296C	DB115366-2296-FR023	C115366-2296E	DB115366-2296	C115366-2296A
	C	340102237B NMB	C115366-2297C	DC115366-2297-FR023	C115366-2297E	DC115366-2297	C115366-2297A
90° entry	D	340102238B NMB	C115366-2298C	DD115366-2298-FR023	C115366-2298E	DD115366-2298	C115366-2298A
	E	340102239B NMB	C115366-2299C	DE115366-2299-FR023	C115366-2299E	DE115366-2299	C115366-2299A
	A	340102240B NMB	C115366-2300C	DA115366-2300-FR023	C115366-2300E	DA115366-2300	C115366-2300A
	B	340102241B NMB	C115366-2301C	DB115366-2301-FR023	C115366-2301E	DB115366-2301	C115366-2301A
	C	340102242B NMB	C115366-2302C	DC115366-2302-FR023	C115366-2302E	DC115366-2302	C115366-2302A
	D	340102243B NMB	C115366-2303C	DD115366-2303-FR023	C115366-2303E	DD115366-2303	C115366-2303A