

CCM04 Series



Features

- SIM and SAM card acceptance
- Compatible with pick and place and lead free soldering

Typical Applications

- Mobile
- POS
- Identification
- GPS

Mechanical

Number of contacts	6 or 8
Mechanical life	30,000 cycles
Card insertion force	10N max
Card extraction force	1N min / 10N max
Contact force	0,35N min to 0,65N
Vibration Frequency	10 to 500 Hz. Acceleration 50m/s ² Duration 6 hours - amplitude 0,35mm
Shock	Peak value 500 m/s ² – Duration 11 ms 3 shocks in each direction of each axis
Max elect. discontinuity	1µs

Contact Electrical Data

Insulation resistance	1000 MΩ min
Contact resistance max	100 mΩ max
Switching current	10 µA min / 1 A max
Dielectric strength	750 Vrms min

Environmental Data

Operating temperature	-40°C to +85°C
Salt mist	IEC 512 test number 11f (96 hours)
Damp heat	IEC 512 test number 11c (10 days)
RoHS compliant	

Packaging

See table below

Soldering Process

Compatible with lead free SMT soldering process

SIM/SAM

Designation	# of Contacts	Contact Plating	PCB Version	Height (mm)	Dim. (mm)	Packaging
CCM04-5120LFS	6	gold	SMT OUT	2,4	11,95 X 14,25	reels of 1,900 pcs
CCM04-4118LFS	6	inlay	SMT OUT	1,9	7,62 X 14,25	reels of 1,900 pcs
CCM04-5137LFS	6	gold	SMT IN	1,9	8,15 X 10,45	reels of 1,900 pcs
CCM04-5149LFS	6	gold	SMT IN	1,9	7,62 X 11,8	reels of 1,900 pcs
CCM04-4151LFS	8	inlay	SMT OUT	2,65	10,16 X 14,25	reels of 1,900 pcs



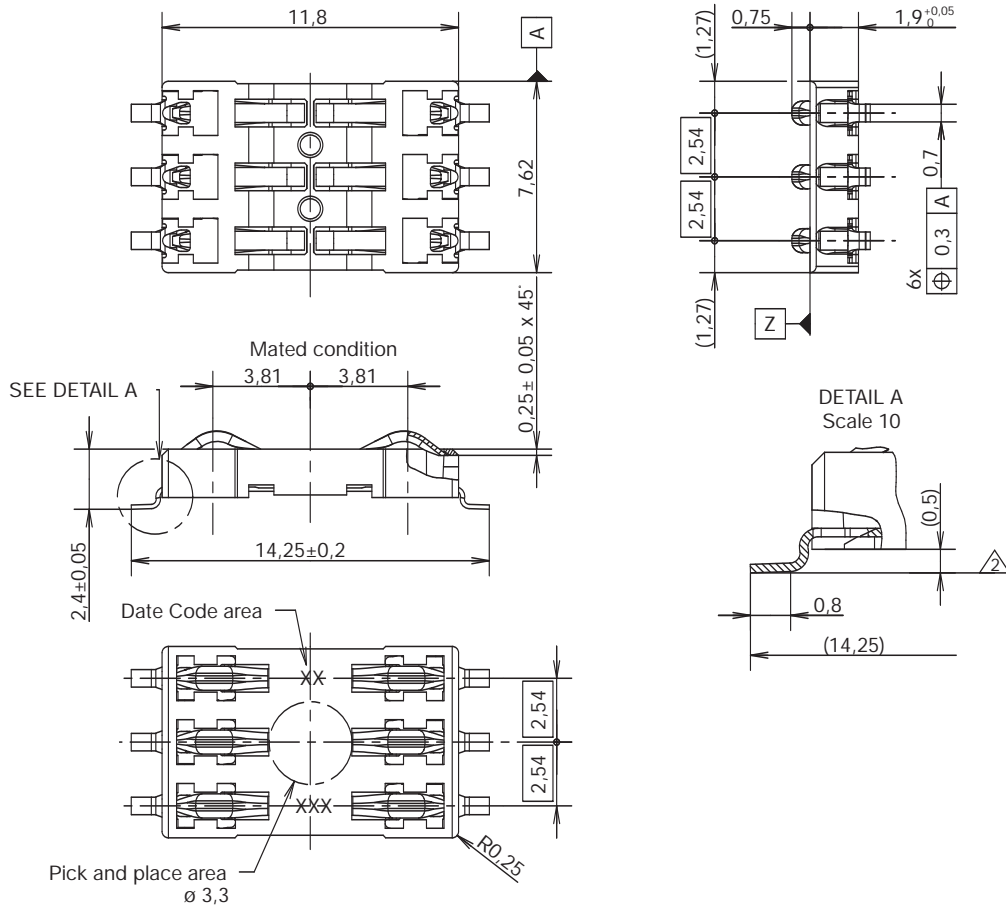
Dimensions are shown in mm
Specifications and dimensions subject to change

www.ck-components.com

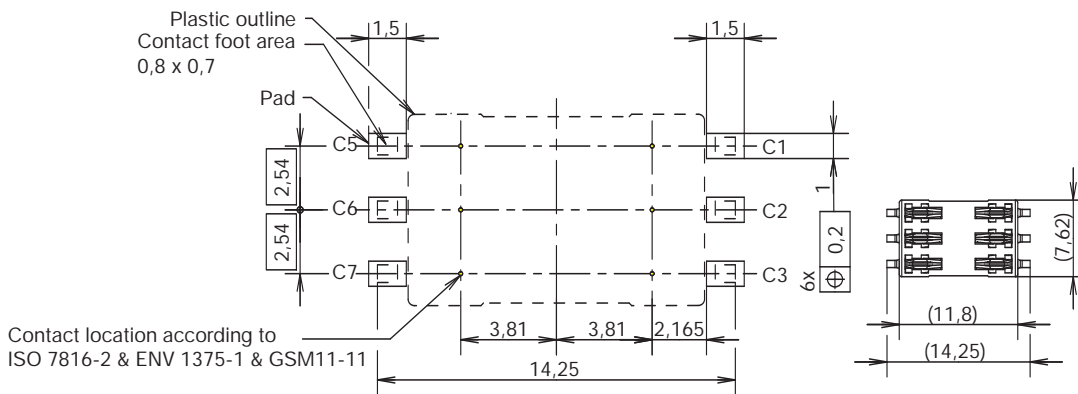
CCM04 Series

CCM04-5120 LFS

SIM/SAM

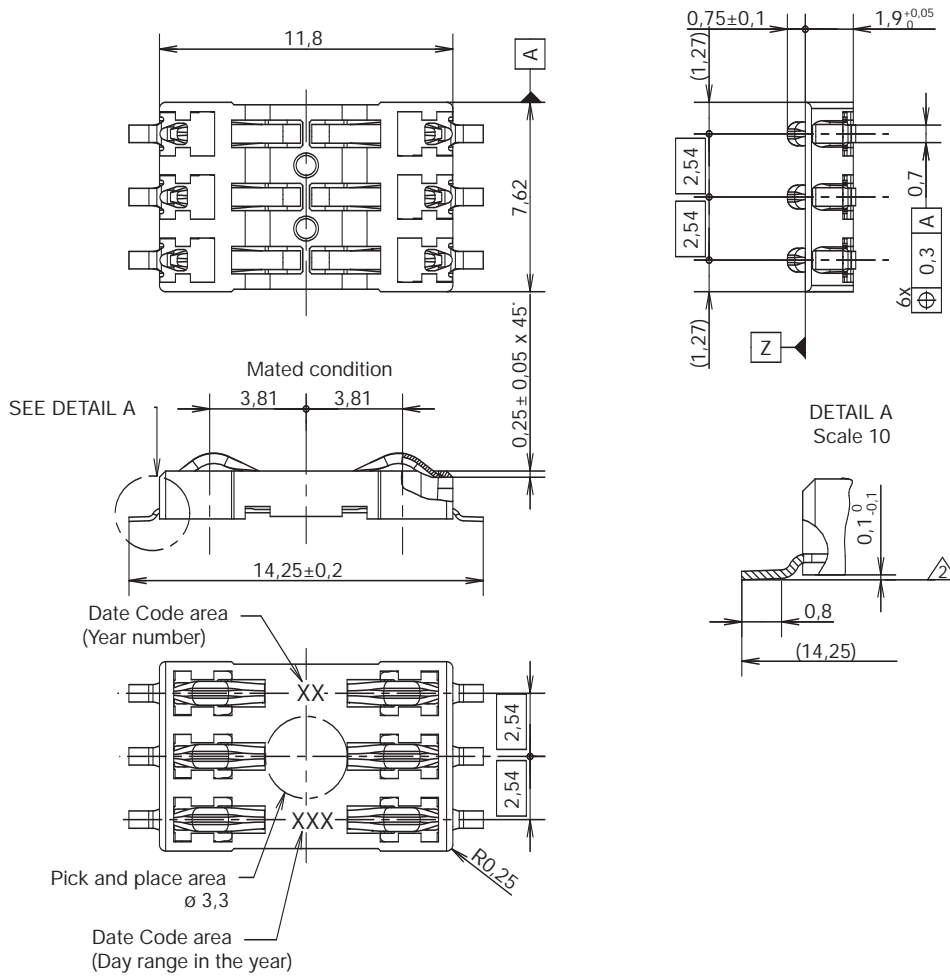


RECOMMENDED PC BOARD LAYOUT (Component side)

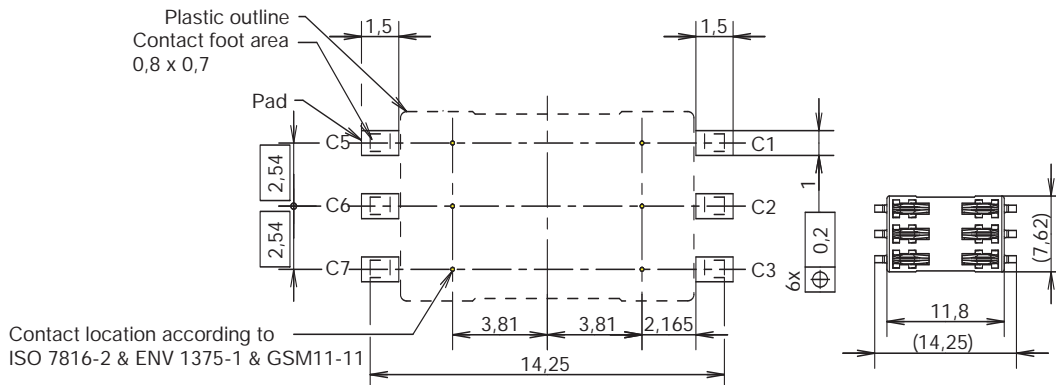


Dimensions are shown in mm
Specifications and dimensions subject to change

www.ck-components.com

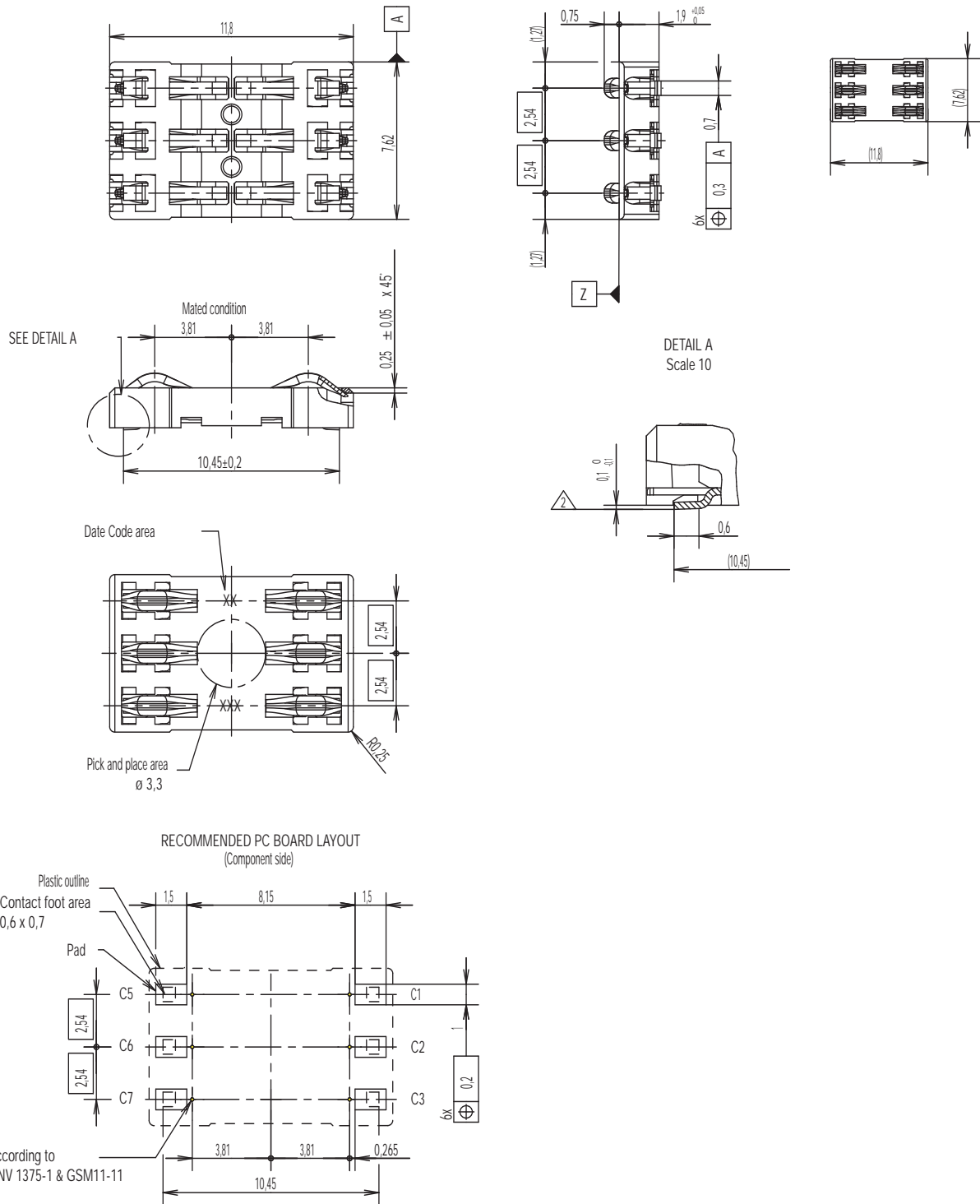


RECOMMENDED PC BOARD LAYOUT (Component side)



CCM04 Series

CCM04-5137 LFS



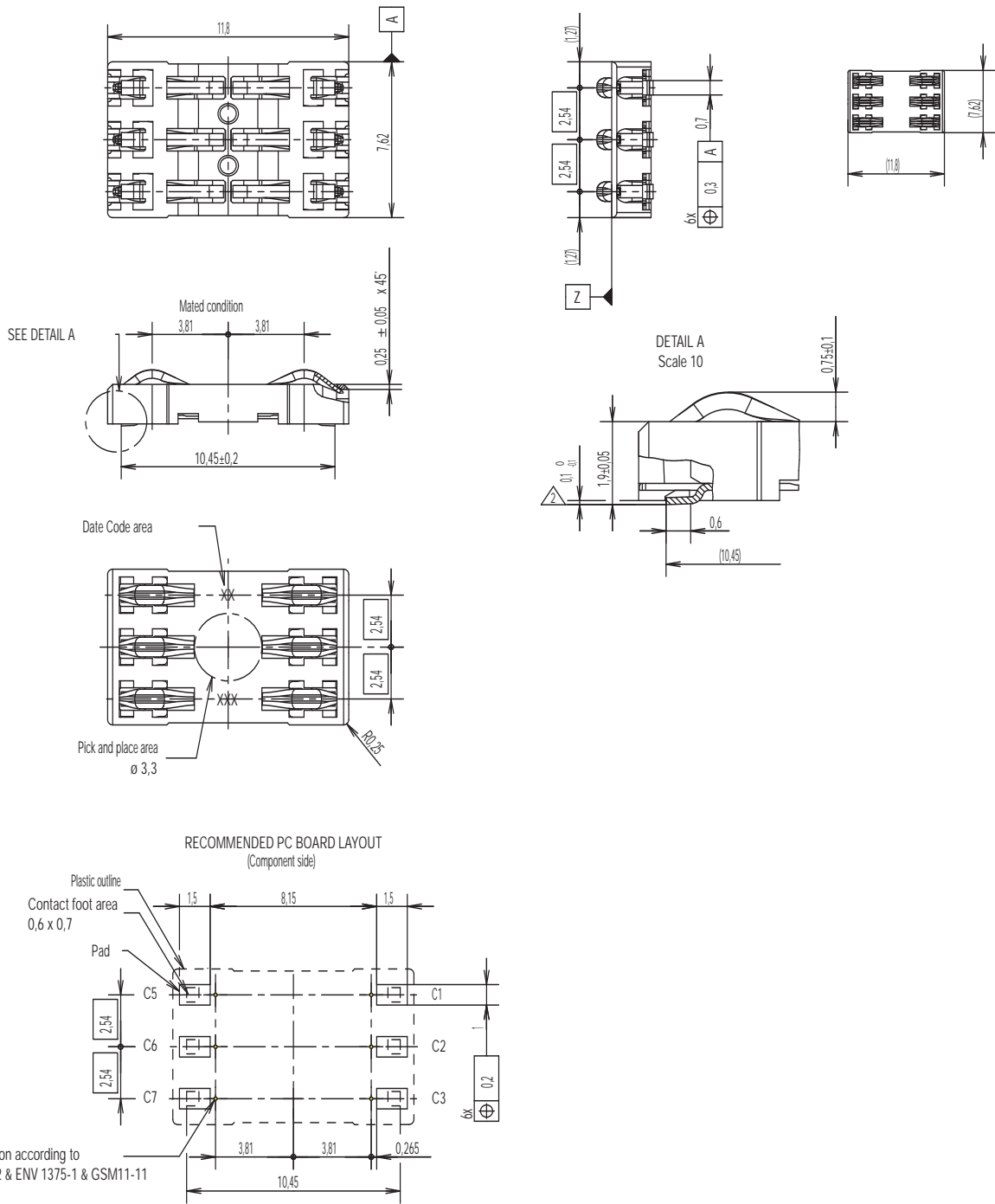
SIM/SAM

Contact location according to ISO 7816-2 & ENV 1375-1 & GSM11-11



Dimensions are shown in mm
Specifications and dimensions subject to change



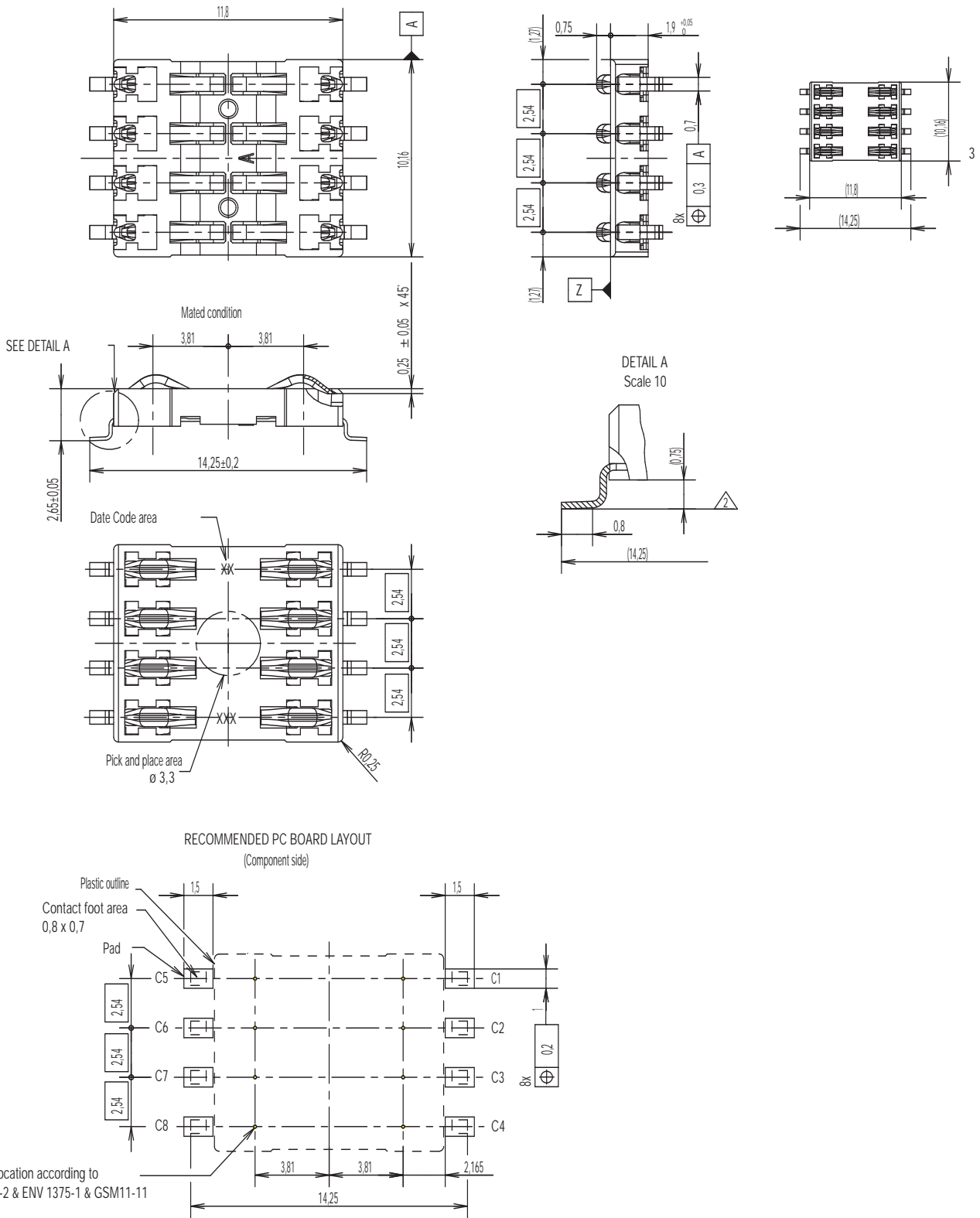


SIM/SAM

CCM04 Series

CCM04-4151 LFS

SIM/SAM



Dimensions are shown in mm
Specifications and dimensions subject to change

www.ck-components.com