

SWITCH SOLUTIONS FOR AUTOMOTIVE INTERIORS

Automotive Interior

In the 60's each object had one function. Car interiors reflected this with easily identifiable interface. The following decades saw more functions fitted into the cockpit and more combined interfaces.

In the search of the perfect human machine interface, and with our mobile technologies, screens invaded our cars. Is it the ultimate answer?

Well, in the end it is about us, Humans, and our need for touch and feel.

Some functions in a car are easier to manage through more traditional technologies.



Interior – Functions

- Multi-function on steering wheel
 - Entertainment, phone or speed controls
- ADAS* on steering column
 - Adaptive cruise control, lane assist, menu access
- Gear shifting
 - Steering wheel paddles and gear stick
- Start & Stop button
- Electronic Park Brake
- Overhead Console
- Hazard/ E-Call
- Window Lifter
- Infotainment Control
- Glove Box
- Sun Visor

To cover these functions, switch solutions have to offer:

- Multiple haptics and sound
- Long life
- Different components heights
- Integration density and tolerance management
- Large panel of activation forces
- Side actuation
- Redundancy for ASIL related components

* Advanced Driver Assistance Systems

AUTOMOTIVE SOLUTIONS

KSC

- 6.4 x 6.4 form factor
- Seven different height values
- High click to soft sound signature
- Long life up to 10 million cycles
- Detect & SPDT versions
- Activation force from 0.5N to 9.6N
- Travel range starting at 0.3 mm up to 1.35 mm
- Reduced tolerances specific edition
- Vertical version



KSC

TLS

- Soft sound with half million operations
- 8.6 x 8.4 x 3.95 mm
- 0.9 mm travel



TLS

For overhead console, E call or EPB*:

PVA

- Short stroke to latch
- 9.2 x 9.8 mm
- DPST / DPDT



PVA

K12S

- Keyswitch with illumination options
- Single or double action
- SPST / DPST



K12S

For EPB and ASIL related functions:

SSW

- IP67 sealed
- Changeover time < 15 ms
- Redundant contacts



SSW

KSC

- KSC DCT – unique product combining tact switch and changeover for self failure detection (SPDT function)
- IP67 sealed



KSC

For start stop buttons:

SSB

- Custom design for integration at Tier 2/ Tier 3 level



SSB

For overhead console, E-call:

Push Push Element

- Emergency switch cover with locking system



OHC - Overhead Console

Modules

- Custom design for integration at Tier 2/ Tier 3 level
- Multiple haptics



OHC

For infotainment control:

ENC

- Optical encoder
- Clear detent / Haptic feel
- Incremental type

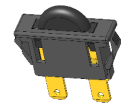


ENC

For glove box, sun visor:

RGB (Custom solution - ask for details)

- Silent detect with long travel
- 14W power handling
- Double detect



RGB

KSV (Custom solution - ask for details)

- Double detect
- Silent operation



KSV

LCA

- SPST NO / SPST NC / SPDT
- Quick connect, solder and PC terminals
- Wide variety of levers and actuators



LCA

* PVA only when a quick change over time is not needed. K12S not for EPB use.

AUTOMOTIVE SOLUTIONS

Purpose Built Developments

- New combination of existing components to reach your specific mix of force, travel, size and sound
- Out of the multiple switch solutions, we can propose a sub assembly designed to your requirements for integration at Tier 2/ Tier 3 level
- Illuminated tact surfaces with capacitive touch
- Embedded switch in interior surfaces
- Context Adaptive Joystick



Contact C&K to learn how we can help you with your next design challenge.
C&K - Trusted Brand in Switch Design with a focus on Innovation and Quality

For enquiries, please contact your local C&K representative or send us an email at:
automotive@ckswitches.com